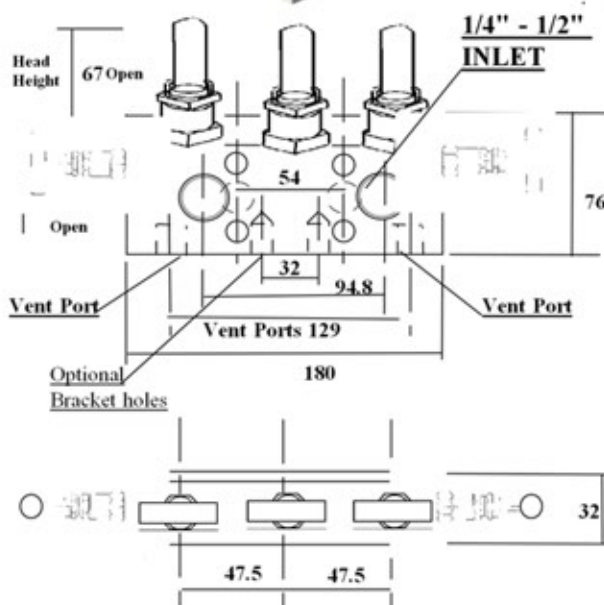
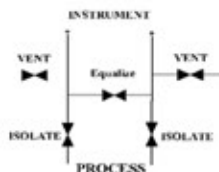
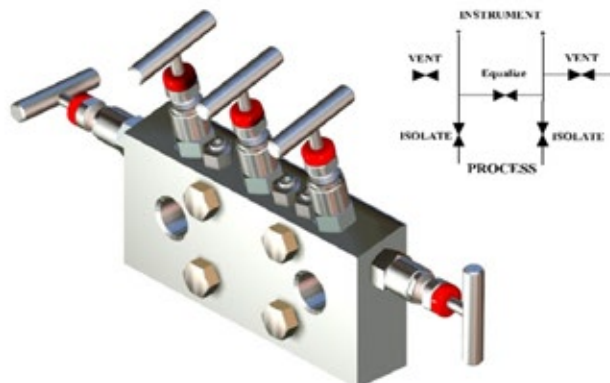


MS5D 'MS5D' Series Direct MANIFOLD VALVES

6,000 psi [Pn 414] Rated 10,000 psi [Pn 690] Rated

5 Valve Direct Mount Manifold for Isolation, Equalization and Venting

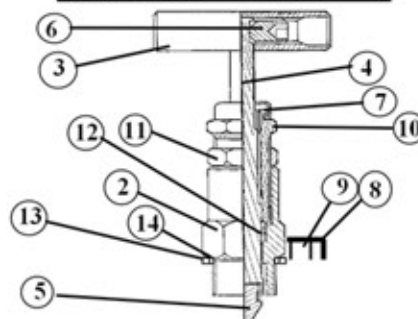


Optional bracket mounting holes in base are M8x1.25, 15mm Deep
Instrument mounting holes are 54mm centres **Weight = 3.05 Kgs**

DESIGN FEATURES

- * Top Sealing Bonnet style
- * Robust HIGH pressure design
- * DESIGNED to be maintained
- * NON-Rotating tip as standard
- * Hard TIP for effective shut-off and life
- * Low operating torque
- * Smooth 7 turns from OPEN to CLOSE
- * Back sealing on the stem
- * 316 ss to NACE Specification
- * Angled Head for ease of use
- * Adjustable gland packing
- * Vent Ports with pressure plugs as standard
- * Full material traceability
- * Stem Seal below actuating threads to prevent contamination & gauling of threads
- * Metal/Metal bonnet seal for pressure tightness even at elevated temperatures
- * Choice of Economy [NE-6K Only] or Standard Head [NS] or LOW TORK Head [NL]

ITEM	COMPONENT	MATERIAL
1	BODY	316 S 11 *
2	BONNET HOUSING	316 S 11 *
3	HANDLE	316 S 11
4	STEM	316 S 11
5	STEM TIP	17 / 4 PH
6	GRUB SCREW	STAINLESS STEEL
7	DUST CAP	PVC
8	RETAINING CAM	STAINLESS STEEL
9	RETAINING SCREW	STAINLESS STEEL
10	GLAND ADJUSTER	316 S 11
11	LOCK NUT	316 S 11
12	GLAND PACKING	PTFE / GRAPHOIL
13	BONNET GASKET	316 S 11
14	BONNET SEAL	V PTFE



Sample Part Number MS5DP0515NF0S 1/2"NPT[F]

1/2"NPT[F] in 316SS 5 Valve Dirict Manifold 5mm Bore, - Rated 6,000psi/Pn 414.

VALVE PART NUMBER and ORDERING TABLE

Valve Series	Orifice	Size	Threads	Vent	*Material	Options
MS5DP 6,000 psi/Pn414	05	08 - 1/4" 15 - 1/2"	NF - NPT-female PF - BSPP-female TF - BSPT-female	0=No Vent	D - 31803 Duplex SS H - Hasteloy M - Monel S - 316 SS	AT - AnitTamber G - Graphoil HW - Handwheel-316 Tg - Tagging Tf - Soft Tip [PEEK] Tk - Soft Tip [PVDF]
MS5DX 10,000 psi/Pn690						

We reserve the right to change specifications stated in this leaflet due to our continuing programme of development. All valves have 'T' Bar handle as standard.